



**MPO**

**FPO**

# CADDIE BOOK

NORTHWOOD BLACK

MPO Course



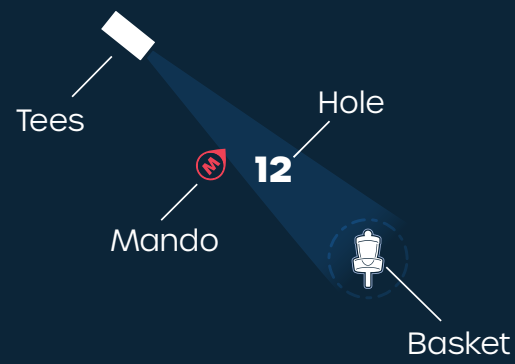
# NORTHWOOD BLACK

MPO LONG TEES | FPO SHORT TEES

Player warm-up at Oakwood Park

HIRSTEIN ROAD

- Trees
- Sidewalks
- Dirt
- Buildings
- Roads
- FPO
- MPO



- Tournament Central
- Spectator Check-in
- Spectator Parking
- Player/Staff Parking ONLY
- Water
- Restrooms
- Spectating Areas
- VIP Spectating Areas
- Areas of Interest
- Spectator Parking

PAR  
**MPO** **68** **10,499 FT.**

PAR  
**FPO** **68** **8,678 FT.**





# NORTHWOOD BLACK

MPO Long Tees | FPO Short Tees • Morton, IL



HOLE	1	2	3	4	5	6	7	8	9	OUT	
PAR	3	4	4	4	4	5	3	3	4	34	MPO
Dist. (ft.)	455	580	604	637	451	947	325	389	732	5,120	
PAR	3	4	4	4	4	5	3	3	4	34	FPO
Dist. (ft.)	455	505	453	520	451	790	325	307	564	4,370	

HOLE	10	11	12	13	14	15	16	17	18	IN	TOT	
PAR	3	3	5	4	5	4	3	3	4	34	68	MPO
Dist. (ft.)	400	380	1,050	653	893	650	330	320	703	5,379	10,499	
PAR	3	3	5	4	5	4	3	3	4	34	68	FPO
Dist. (ft.)	325	260	725	502	731	525	330	320	590	4,308	8,678	

## GENERAL RULES & NOTES

- The 2-meter rule is not in effect.
- **OUT OF BOUNDS:** OB areas (including water) are primarily defined by a white painted line or white string/rope. Where present, white stakes serve as a visual aid for OB lines. Where fencing is used, the inside edge of the fence posts is the OB line. As is standard, the line itself is considered OB. (806.02)
- **OB WATER:** For any OB water that is not marked with a painted line or rope, a disc coming to rest surrounded by water is considered OB.
- Ad walls that are parallel to an OB line DO NOT serve as the OB line. The OB line will be defined by a painted line running in front of and parallel to the walls. The minimum distance between the walls and OB line is 1 meter.
- **DROP ZONES:** Optional Drop Zones (DZ) may be provided on holes for tee shots that come to rest OB. Unless otherwise specified, players may re-throw from their previous lie (tee), from where the disc was last inbounds, OR from the Drop Zone. One penalty throw is assessed no matter which option is chosen.
- **OB RULE RESTRICTIONS:** Where noted, Drop Zone use may be required after an OB throw, or a player's standard options after going OB may be restricted. PDGA rules waivers have been obtained for these holes, and are marked accordingly.
- **MANDATORIES:** Mandatory Routes are played according to PDGA Rule 804.01. An arrow will be affixed to an object defining the left or right boundary of the restricted plane by pointing to the side of the object opposite the restricted plane. The restricted plane continues away from the marked object, as indicated by an orange painted line, and continues in the same direction of the line to infinity. The restricted plane extends vertically from the painted line to infinity bounded by vertical planes on each edge of the line. If part of a thrown disc clearly enters into a restricted plane in play for the hole, the player receives one penalty throw. The lie for the next throw is the DROP ZONE for that MANDATORY, unless otherwise noted. In the case that a Drop Zone is located more than 10 m from the mandatory object, a PDGA rules waiver has been obtained.
- **RELIEF:** Players may obtain relief backward on the line of play, without penalty, from temporarily placed advertising assets, permanent sign posts, or fairway markers, per PDGA Rule 803.02 (A). As the rule states, "unless greater relief is announced by the Director" instead of only taking the closest lie that provides relief, the Tournament Director has granted up to 1m relief from the aforementioned assets/obstacles.
- **CASUAL OBSTACLES:** Per rule 803.01 (B) (1), "A casual obstacle is ... any item as

designated by the Director," spectator stakes and ropes that are in-bounds have been designated as casual obstacles, and may be moved and replaced if they impede a player's stance.

- **CASUAL AREAS:** Players may obtain relief from unmarked casual water per PDGA Rule 806.03. Areas marked with orange paint are designated as casual areas.
- Per PDGA waiver, players are responsible for friends or family who are spectators and who attempt to join the playing group in violation of CM 3.05.G. Players will receive courtesy violation penalties under 812.C if this occurs.
- In the event of a tie for first place after four rounds of play, a winner will be determined by sudden death playoff on holes 18 and 1 repeating until a winner is determined.

## HOLE-SPECIFIC NOTES

### HOLE 1

**OB:** Any disc coming to rest left and/or long of stakes.

### HOLE 7

**OB:** Discs coming to rest to the right of the white stakes.

### HOLE 8

**OB:** Discs coming to rest to the right or long of the white stakes.

**DROP ZONE:** After any throw coming to rest OB, player may proceed to DZ +1 penalty throw. Standard OB rules apply.

### HOLE 10

**OB:** Discs coming to rest within fenced-in area left.

### HOLE 13

**OB:** Discs coming to rest within white staked area short of green.

### HOLE 14

**OB:** Discs coming to rest right of the fence.

### HOLE 15

**OB:** Discs coming to rest left of white stakes.

### HOLE 17

**OB:** Discs coming to rest to the left or long of the white stakes.

**DROP ZONE:** After any throw coming to rest OB, player may proceed to DZ +1 penalty throw. Standard OB rules apply.

### HOLE 18

**OB:** Long of basket in parking lot.







**LEDGESTONE OPEN**  
 Northwood Black | Sunset Hills | Eureka Lake  
 Peoria, IL



## HOLE MAPS LEGEND

- |  |                        |  |                            |
|--|------------------------|--|----------------------------|
|  | OB Water               |  | Open Area                  |
|  | OB Area                |  | Dirt Areas / Forest Floor  |
|  | Hazard Area            |  | Cement Areas               |
|  | Rough / Marsh          |  | Paved Areas / Parking Lots |
|  | Dirt Paths / Roads     |  | General Water              |
|  | Roads                  |  | Trees / Canopy             |
|  | Sidewalks / Cart Paths |  | Bushes / Brush             |
|  | Tree Trunks (approx.)  |  | Evergreens                 |
- 
- |                           |                        |   |
|---------------------------|------------------------|---|
| <p>to pin    from tee</p> | Distance Markers (ft.) | <p><b>Hole Shape Swath</b><br/> <i>Measuring reference to indicate landing zone deviation from center line of play to achieve C1 or C2.</i></p> |
| <p>MPO    FPO</p>         | Basket (MPO/FPO)       | <p><b>Mandatory Line</b></p>  |
|                           | Tee Box (MPO/FPO)      | <p>Drop Zone</p>  |
|                           | Raised Baskets         | <p>Fences / Walls / Barriers</p>  |
|                           | Other Tee Boxes        | <p>Buildings / Obstructions</p>   |
|                           | Other Baskets          | <p>Light Posts/Poles</p>  |

NORTHWOOD BLACK

1



E+



U

MPO

FPO

PAR

3

**B** Bushnell OFFICIAL

455

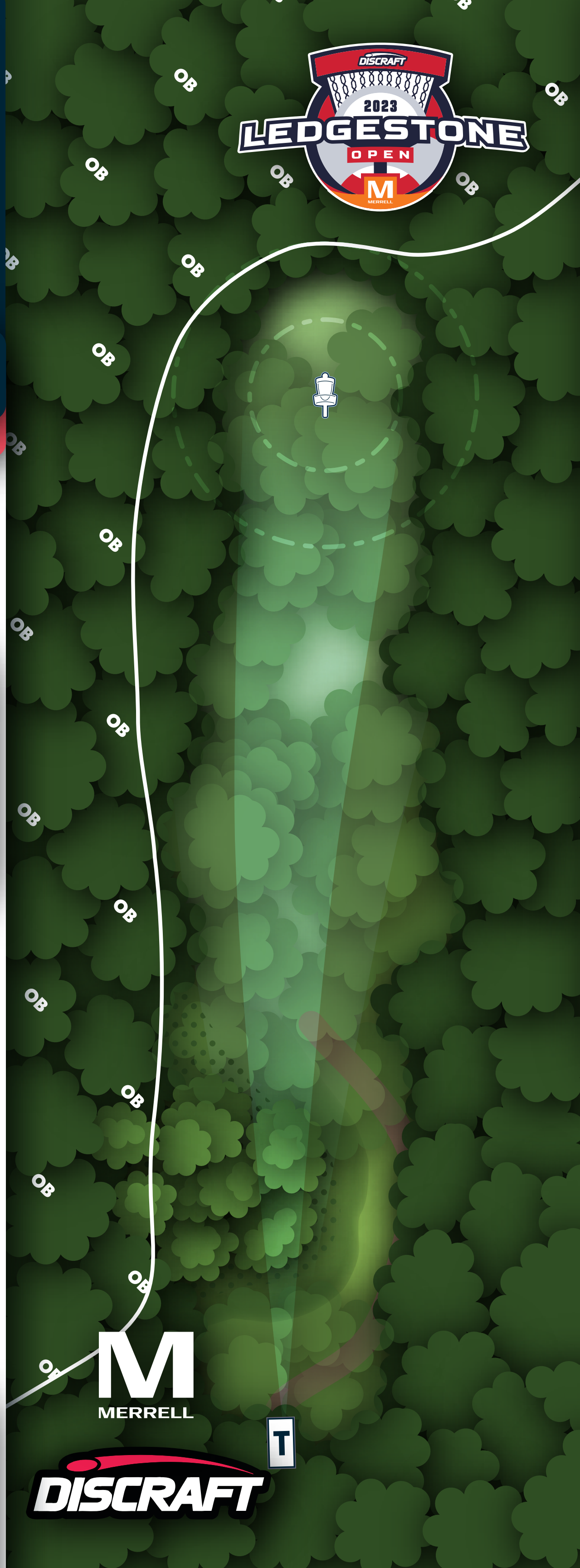
FEET

138.7 m



**RULES & NOTES**

OB: Any disc coming to rest left and/or long of stakes.



M  
MERRELL

DISCRAFT

T

NORTHWOOD BLACK

2



E+



U

FPO

PAR

4

Bushnell OFFICIAL

505

FEET

153.9 m





NORTHWOOD BLACK

2

 **DGPT ELITE+**

MPO

PAR

4

 **Bushnell** OFFICIAL

580

FEET

176.8 m



**M**  
MERRELL

**DISCRAFT**

T

NORTHWOOD BLACK

3



E+



U

FPO

PAR

4

Bushnell OFFICIAL

453

FEET

138.1 m





NORTHWOOD BLACK

3

 **DGPT ELITE+**

MPO

PAR

4

 **Bushnell** OFFICIAL

604

FEET

184.1 m



**M**  
MERRELL

**DISCRAFT**

T



NORTHWOOD BLACK

4



E+



U

FPO

PAR

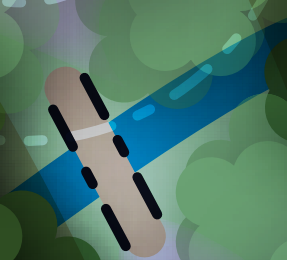
4

Bushnell OFFICIAL

520

FEET

158.5 m



M  
MERRELL



NORTHWOOD BLACK

4

 **DGPT ELITE+**

MPO

PAR

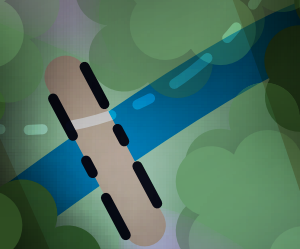
4

 **Bushnell** OFFICIAL

637

FEET

194.1 m



**M**  
MERRELL



**DISCRAFT**



NORTHWOOD BLACK

5



E+



U

MPO

FPO

PAR

4

 **Bushnell** OFFICIAL

451

FEET

137.5 m



M  
MERRELL





NORTHWOOD BLACK

6



E+



U

FPO

PAR

5

Bushnell OFFICIAL

790

FEET

240.8 m



M  
MERRELL

DISCRAFT

NORTHWOOD BLACK

6

 **DGPT ELITE+**

MPO

PAR

5

 **Bushnell** OFFICIAL

947

FEET

288.6 m



**M**  
MERRELL

**DISCRAFT**

T







NORTHWOOD BLACK

8



E+



U

MPO

FPO

PAR

3

**B** Bushnell OFFICIAL

389

307

FEET

118.6 m

93.6 m



### RULES & NOTES

**OB:** Discs coming to rest to the right or long of the white stakes.

**DROP ZONE:** After any throw coming to rest OB, player may proceed to DZ +1 penalty throw. Standard OB rules apply.



NORTHWOOD BLACK

9



E+



U

FPO

PAR

4

Bushnell OFFICIAL

564

FEET

171.9 m



T



T



NORTHWOOD BLACK

9

 **DGPT ELITE+**

MPO

PAR

4

 **Bushnell** OFFICIAL

732

FEET

223.1 m





NORTHWOOD BLACK

10



E+



U

FPO

PAR

3

Bushnell OFFICIAL

325

FEET

99.1 m



RULES & NOTES

OB: Discs coming to rest within fenced-in area left.



NORTHWOOD BLACK

10

 **DGPT ELITE+**

MPO

PAR

3

 **Bushnell** OFFICIAL

400

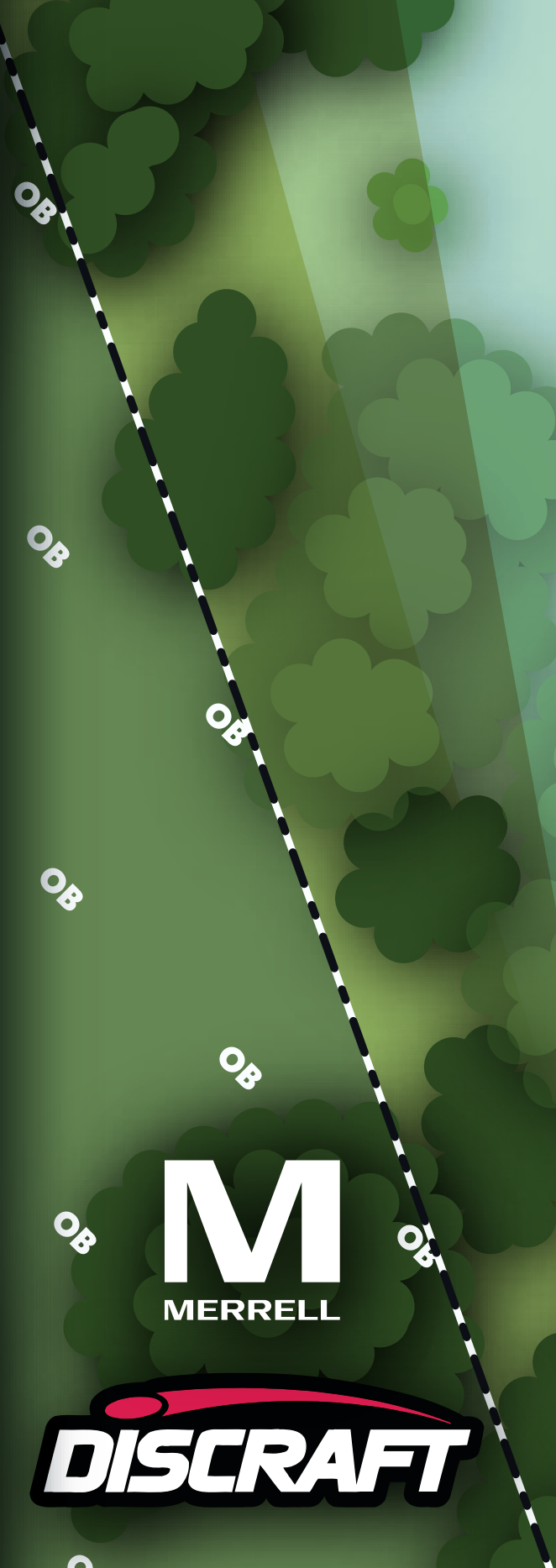
FEET

121.9 m



**RULES & NOTES**

OB: Discs coming to rest within fenced-in area left.



OB

OB

OB

OB

OB

OB

OB

OB

OB





NORTHWOOD BLACK

11



E+



U

FPO

PAR

3

Bushnell OFFICIAL

260

FEET

79.2 m



T

M  
MERRELL

DISCRAFT

T



NORTHWOOD BLACK

11

 **DGPT ELITE+**

MPO

PAR

**3**

 **Bushnell** OFFICIAL

**380**

FEET

**115.8** m



**M**  
MERRELL

**T**

**DISCRAFT**

NORTHWOOD BLACK

12



E+



U

FPO

PAR

5

Bushnell OFFICIAL

725

FEET

221.0 m



T

M  
MERRELL



T

16

16

15



NORTHWOOD BLACK

12

 **DGPT ELITE+**

MPO

PAR

5

 **Bushnell** OFFICIAL

1,050

FEET

320.0 m



15

16

16

**M**  
MERRELL



T

NORTHWOOD BLACK

13



E+



U

FPO

PAR

4

Bushnell OFFICIAL

502

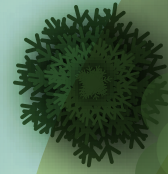
FEET

153.0 m



RULES & NOTES

OB: Discs coming to rest within white staked area short of green.





NORTHWOOD BLACK

13

 **DGPT ELITE+**

MPO

PAR

4

 **Bushnell** OFFICIAL

653

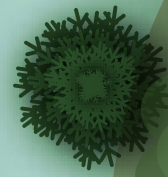
FEET

199.0 m



**RULES & NOTES**

**OB:** Discs coming to rest within white staked area short of green.



NORTHWOOD BLACK

14



E+



U

FPO

PAR

5

Bushnell OFFICIAL

731

FEET

222.8 m



RULES & NOTES

OB: Discs coming to rest right of the fence.





NORTHWOOD BLACK

14

 **DGPT ELITE+**

MPO

PAR

5

 **Bushnell** OFFICIAL

893

FEET

272.2 m

 **RULES & NOTES**

OB: Discs coming to rest right of the fence.



NORTHWOOD BLACK

15



E+



U

FPO/U

PAR

4

**B** Bushnell OFFICIAL

525

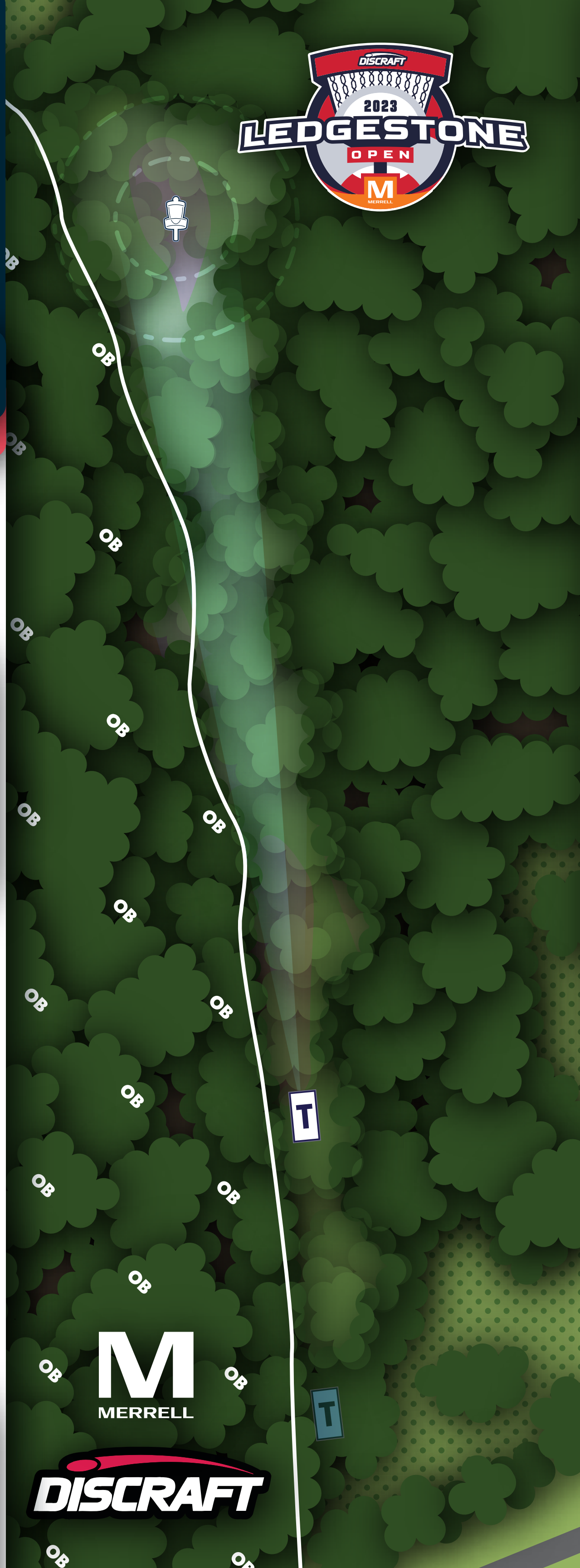
FEET

160.0 m



**RULES & NOTES**

OB: Discs coming to rest left of white stakes.





NORTHWOOD BLACK

15

DGPT ELITE+

MPO

PAR

4

Bushnell OFFICIAL

650

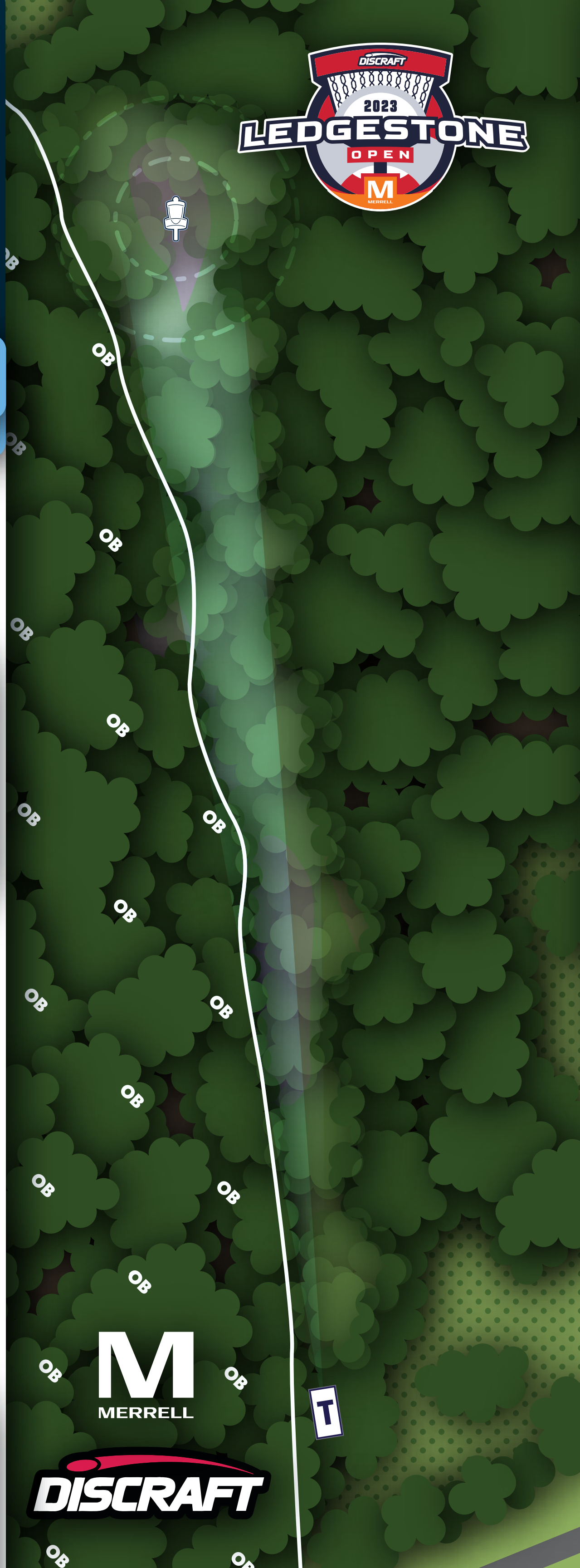
FEET

198.1 m



RULES & NOTES

OB: Discs coming to rest left of white stakes.



T

NORTHWOOD BLACK

16



E+



U

MPO

FPO

PAR

3

**B** Bushnell OFFICIAL

330

FEET

100.6 m





NORTHWOOD BLACK

17



E+



U

MPO

FPO

PAR

3

**B** Bushnell OFFICIAL

320

FEET

97.5 m



**RULES & NOTES**

**OB:** Discs coming to rest to the left or long of the white stakes.

**DROP ZONE:** After any throw coming to rest OB, player may proceed to DZ +1 penalty throw. Standard OB rules apply.



NORTHWOOD BLACK

18



E+



U

FPO

PAR

4

**B** Bushnell OFFICIAL

590

FEET

179.8 m



**RULES & NOTES**

OB: Long of basket in parking lot.



OB



T



T





NORTHWOOD BLACK

18

 **DGPT ELITE+**

MPO

PAR

4

 **Bushnell** OFFICIAL

703

FEET

214.3 m

 **RULES & NOTES**

OB: Long of basket in parking lot.



OB

